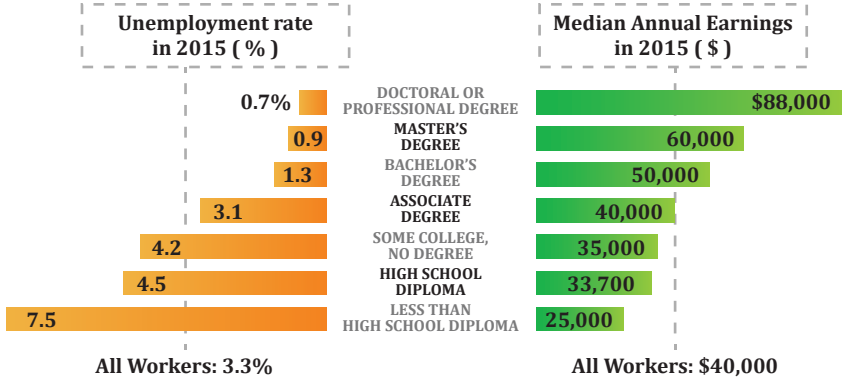




# Training Pays

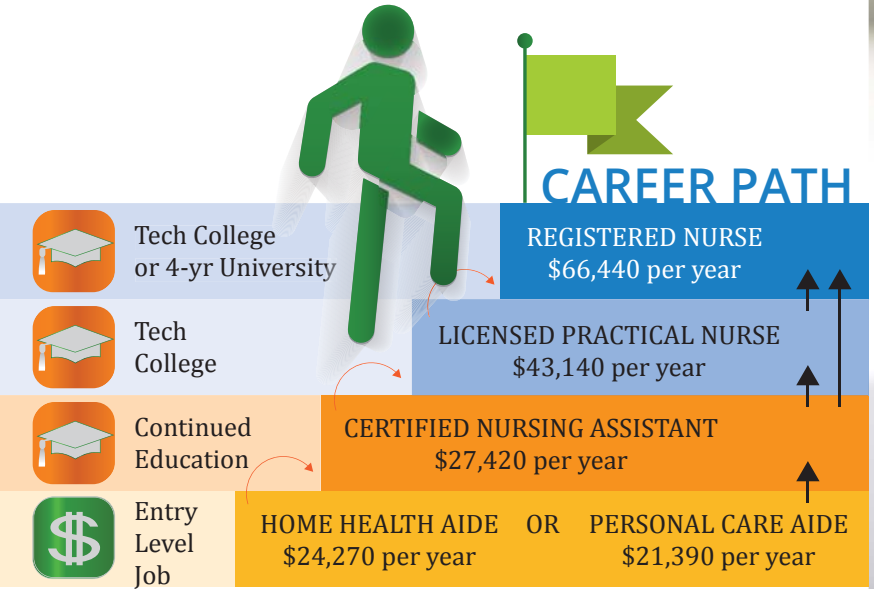
Earnings and unemployment rates by skills attainment



Source: US Census Bureau, 2015 American Community Survey, Population 25 to 64 years

# Many paths to reach the top

Below is one example of many career paths across all industries. Career path progression reward workers for gains in skills and knowledge.



Source: Wisconsin DWD, Occupational Employment Statistics (OES), 2015 WI Average Wages

JobCenterOfWisconsin.com



Where talent & opportunity meet

# LOOKING FOR A JOB?

- BETTER JOB CONNECTIONS
- PERSONALIZED SEARCH TOOLS
- MATCH SKILLS

- SKILLS-BASED JOB SEARCHES
- WAGE DATA BY OCCUPATION
- ADVANCED RESUME TOOLS
- MOBILE-RESPONSIVE DESIGN

A proud partner of the AmericanJobCenter® network OEA-16379 - P (R. 11/2016)



# HOT JOBS to 2024



Hot Jobs have the most projected openings and will grow faster than average and pay wages above the state median wage.

# Hottest jobs by Occupational Group

Explore more about these occupations at [SkillExplorer.wisconsin.gov](https://SkillExplorer.wisconsin.gov)

## Occupational Group

### Management

Occupational Group	Median Annual Wage†
General & Operations Managers	\$88,290
Financial Managers	103,540
Medical & Health Services Managers	83,760
Food Service Managers	43,820
Sales Managers	108,310
Computer & Information Systems Managers	107,340
Social & Community Service Managers	58,080
Administrative Services Managers	88,620

### Business and Financial Operations

Accountants & Auditors	\$61,710
Market Research Analysts & Marketing Specialists	51,260
Management Analysts	71,230
Personal Financial Advisors	58,780
Training & Development Specialists	50,060
Loan Officers	61,150
Cost Estimators	57,640
Financial Analysts	70,500

### Computer and Mathematical

Computer Systems Analysts	\$72,910
Software Developers, Applications	82,010
Computer Programmers	72,850
Computer User Support Specialists	45,690

### Architecture and Engineering

Civil Engineers	\$72,710
-----------------	----------

Source: Wisconsin DWD, OEA, 2014-2024 WI Projections

†Source: Bureau of Labor Statistics (BLS), Occupational Employment Statistics (OES), estimates from May 2016

## Occupational Group

### Community and Social Service

Child, Family & School Social Workers	\$44,430
---------------------------------------	----------

### Education, Training and Library

Health Specialties Teachers, Postsecondary	\$79,670
--	----------

### Arts, Design, Entertainment, Sports, and Media

Public Relations Specialists	\$50,260
------------------------------	----------

### Healthcare Practitioners and Technical

Registered Nurses	\$65,150
Physical Therapists	80,190
Medical Records & Health Info Techs	37,770

### Sales and Related

Wholesale & Manufacturing Sales Reps	\$57,370
Insurance Sales Agents	55,070
Supervisors of Non-Retail Sales Workers	74,100
Securities, Commodities & Financial Services Sales Agents	59,260
Technical & Scientific Products Sales Reps	71,560



## Occupational Group

### Office and Administrative Support

Supervisors of Office & Admin Support Staff	\$49,670
Billing and Posting Clerks	\$35,390
Insurance Claims & Policy Processing Clerks	\$35,950
Dispatchers	\$39,080
Loan Interviewers & Clerks	\$35,570

### Construction and Extraction

Construction Laborers	\$36,960
Carpenters	\$44,350
Electricians	\$58,160
Construction Operating Engineers	\$53,150
Plumbers, Pipefitters & Steamfitters	\$68,230
Supervisors of Construction Trades Workers	\$62,950

### Installation, Maintenance, and Repair

Maintenance & Repair Workers	\$37,920
Industrial Machinery Mechanics	\$48,880
Bus & Truck Mechanics	\$43,480
HVAC & Refrigeration Mechanics / Installers	\$46,750

### Production

Machinists	\$41,250
Metal & Plastic Computer-Controlled Machine Tool Operators	\$38,300

### Transportation and Material Moving

Heavy & Tractor-Trailer Truck Drivers	\$39,210
---------------------------------------	----------

For more information visit: [WisconsinJobCenter.org/LaborMarketInfo](https://WisconsinJobCenter.org/LaborMarketInfo)