

LABOR MARKET INFORMATION (LMI) EDUCATOR AND PARENT TOOLKIT

WHAT IS LMI? The Wisconsin Department of Workforce Development (DWD) helps youth, job seekers and employers make informed employment decisions through real-time LMI, including statistics, projections and trends on employment, occupations, labor supply and demand, earnings, population and demographics.

Use LMI to help your students:

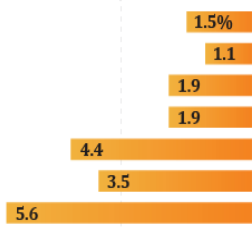
- ▶ Explore the types of jobs that will be available after graduation
- ▶ Learn about wages and earning potential
- ▶ Determine job skills and education requirements
- ▶ Identify where jobs are located
- ▶ Find training opportunities



Training Pays

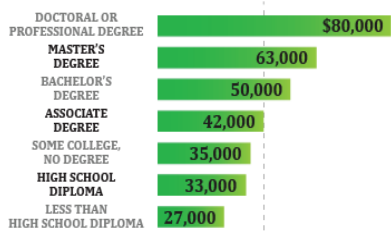
Earnings and unemployment rates by skills attainment

Unemployment rate in 2016 (%)



All Workers: 3.0%

Median Annual Earnings in 2016 (\$)

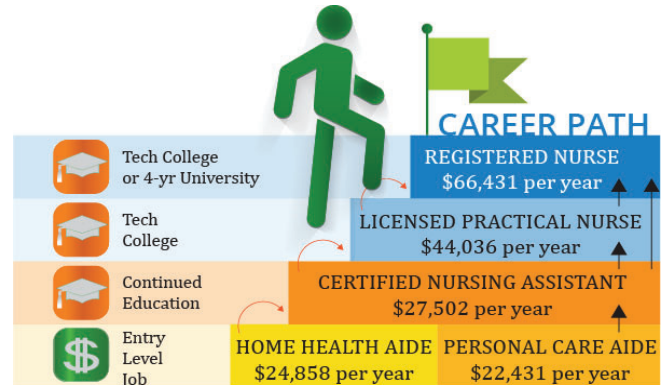


All Workers: \$40,000

Source: 2016 1-YR American Community Survey (ACS), IPUMS.org

Many paths to reach the top

Below is one example of many career paths across all industries. Career path progression rewards workers for gains in skill and knowledge.



Source: WI DWD, OES, 2016 WI Average Wages

WisConomy



WHAT IS IT? WisConomy offers easy-to-use, online tools that deliver labor market data in new and engaging ways.

HOW CAN I USE IT? DATA SEARCH tools help students, parents and educators research hot jobs with high-demand and growth, learn about licensed occupations and related requirements, explore occupations and income earning potential and more.

DATA VISUALIZATION tools enable students, parents and educators to create personalized reports and share information using the most current LMI data available in Wisconsin.

JOB & INDUSTRY PROJECTIONS



WHAT IS IT? Job & Industry Projections offer long-term employment projections available by industry and occupation. The projections are downloadable in Microsoft Excel by North American Industry Classification System (NAICS) code and title. The tool also highlights the change in employment numbers, including which industries and occupations will experience the highest job growth.

HOW CAN I USE IT? Take a deep data dive to compare and contrast industries and occupations in Wisconsin as they look today and how they stack-up in the future.

HOT JOBS



WHAT IS IT? Hot Jobs data provides projections for high growth occupations that meet the following criteria:

- 1) The median salary above the state median;
- 2) The percentage change must be greater than the state average; and
- 3) Have the most projected openings.

HOW CAN I USE IT? After learning about Hot Job occupations, your students can use codes to learn more about NAICS specific jobs within these occupations.

COUNTY PROFILES



WHAT IS IT? County Profiles offer County-level reports on population, demographics, labor force dynamics, industry employment and wages, local employment projections and personal income.

HOW CAN I USE IT? Compare and contrast profiles from county-to-county. Research trends in your county, neighboring counties and in counties throughout the state.

MyLMI



A proud partner of the
AmericanJobCenter[®]
network

WHAT IS IT? MyLMI is a tool on JobCenterofWisconsin.com that offers a variety of applications for job seekers and employers, enabling them to customize desired information by selecting one or more widgets. Widget examples include: Job Openings, Candidates and Unemployment Maps, County Wages, Education & Training, County Profiles, Hot Jobs and Job & Industry Projections.

HOW CAN I USE IT? MyLMI offers tools that allow your students to explore all aspects of LMI, including data to compare employment trends and job openings by county, and discover education and training requirements and resources for specific occupations.

SKILL EXPLORER



WHAT IS IT? Skill Explorer is an application that provides information on jobs that share similar skills for job seekers, employers, educators and the general public. Users can research opportunities that match their existing skill sets or learn about the skills and training needed for their desired job. Skill Explorer also can help students and job seekers of any age identify transferable skills, career pathways and training needs.

HOW CAN I USE IT? Skill Explorer allows students to discover different jobs and skill sets and evaluate how their skills transfer between industries and occupations. Use this tool to help your students research the skills and education necessary to obtain a summer job, as well as to achieve their dream job.

Are you interested in learning more about LMI Toolkit resources? Go to WisConomy.com/toolkit to find direct links for desired information.

Do you have questions, comments or need help with analyzing and interpreting LMI data? Contact Us to find your Regional Labor Market Economist.